

Description

The Alpwise *Bluetooth®* Smart development kit is a platform for rapid prototyping and evaluating of your *Bluetooth®* Smart solutions, thus facilitates the complete development of your wireless product.

The kit consists is provided with :

- Bluetooth® Smart module ALPW-BLEM103 mounted on the adaptation board ALPW-DVKCM3
- *Bluetooth®* Smart Nano USB dongle
- ALPW-BLESDE® software development environment
- A development board can be added in option

Main features

The Alpwise Development Kit provides all connections, peripherals access, debug and programming facilities to ease *Bluetooth®* product development.

- Main board integrates a powerful STM32F1x Cortex M3 MCU with 1MB Flash and 96kB RAM
- Equipped with a ready-to-use ALPW-BLEM103 single mode *Bluetooth®* Smart HCI module based on EM9301 controller. The module can be totally isolated from the rest of the board by using jumpers.
- All of MCU GPIO and alternate functions are available through connectors
- Serial debug and JTAG connection
- Bootloader interface for programming, two wires serial debug
- User interface with two LEDs and two switches

Contact





Alpwise Headquarter

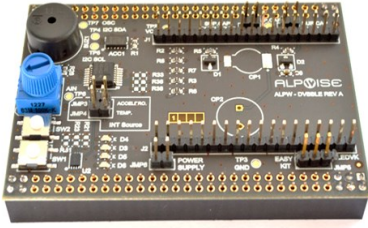
4 avenue Doyen Louis Weil
38000 Grenoble, FRANCE
T: +33 4 76 22 22 50
F: +33 4 76 22 15 64
alpwise@alpwise.com
www.alpwise.com

Alpwise Worldwide

You can buy our products through our International distributors. You will find the distributors details on our website on the contact page.

Follow us on :  

ALPW-BLEDVB: BLE Application development board extension



The ALPW-BLEDVB is a multi-sensors application development board to extend BLE application development capabilities:

- Provided with an accelerometer, a temperature sensors, ADC, a potentiometer, 4 LEDs, 2 switches and a buzzer
- Supercapacitor allowing 30 minutes' battery duration
- Dimensions 80mm x 55mm
- Max Active Power Consumption 45 mA

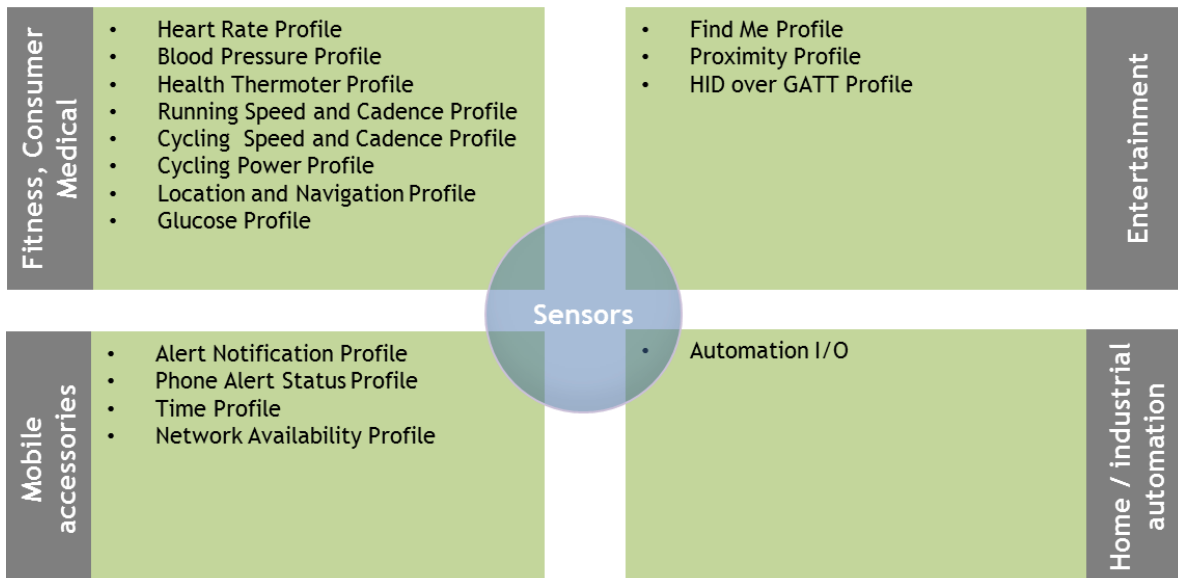
ALPW-BLESDE®: Bluetooth® Software Development Environment Suite

The ALPW-BLESDE for ALPW-BLEM003 enables engineers to easily develop their own application on top of the Alpwise Bluetooth® Smart stack and profiles. It provides a set of software suite to develop, test & evaluate the Bluetooth® low energy technology:

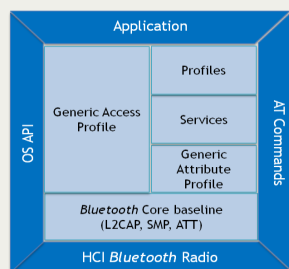
- Software kit Manager to set-up and handle the development kit
- Bluetooth® stack and profiles in Object Code running on ALPW-BLEM003 module
- Demo applications to easily evaluate the technology

User Applications

The ALPW-BLEM003 facilitates the integration of cost-effective and low power consumption wireless technologies for the following application segments, thanks to a continuously updated and qualified list of profiles:



You may also be interested in these products



Bluetooth® low energy protocol stack SDK.

The ALPW-BLESKD001 provides the software environment tools to implement the single mode Bluetooth® Smart compliant protocol stack into any embedded product.