

EM85xx Development Tools

There are two development tool-kits available for the EM85xx devices.

- An entry level evaluation board EMEVB85xx
- A high-end development kit EMDVK85xx.

Each development tool-kits are declined into different variants for the different devices of the EM85xx family

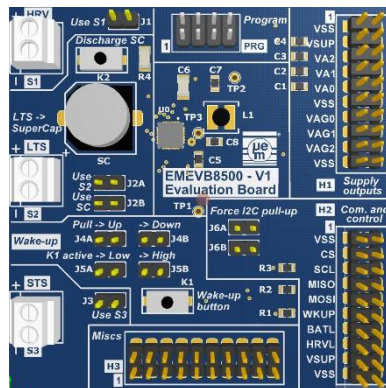
EMEVB85xx

Description

The EMEVB85xx is the entry level development tool used for the evaluation and prototyping of EM85xx integrated energy harvesting solutions. The EMEVB85xx consists on a flexible board with various configurability. It is possible to select the internal or external storage element, and to easily plug a harvester, external storage elements and the application.

Main features

- Long Term and Short Term storage selection (internal or external)
- External harvester connector
- Expansion header for prototyping and external connection
- Configurable wake-up line with push-button
- EM85xx I²C pull-up selection



EMDVK85xx

Description

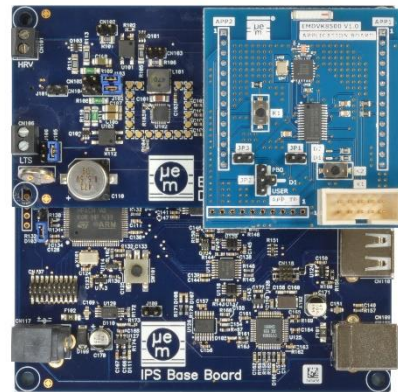
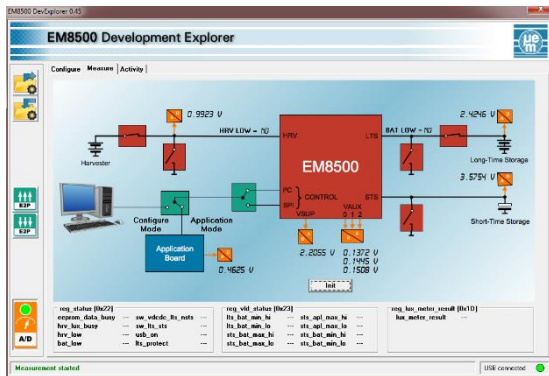
The EMDVK85xx is a powerful tool for the configuration, evaluation, prototyping and measurement of integrated energy harvesting solution based on EM85xx devices. The development kit offers a complete set of features to characterize and configure your hardware application.

Hardware Main features

- Modular architecture for prototyping and validating your power management enabled application
- Flexible load and harvester source selection
- Ready to measure nodes for lab equipment (oscilloscope, power analyzer, ...)
- Up to eight high speed acquisition channels

Software Main features

- Expansion header for application prototyping
- Example application board
- On-board EM85xx configuration tool
- Self powered by USB
- Plug-and-Play environment
- EM85xx Configuration management
- Support for SPI and I²C access
- Advanced real-time voltage profile recording
- Monitoring and advanced measurement
- Corner cases emulation (e.g. application start-up, ...)



Main features comparison

Main Feature	EMEV85xx	EMDV85xx
Flexible load and harvester source selection	✓	✓
Expansion header for prototyping and external connection	✓	✓
On board storage elements	✓	✓
On board E2prom configuration unit		✓
On board measurement unit		✓
Graphical user interface		✓
Real-time voltage waveform display		✓
Application board		✓

Ordering

Product	Ordering number
Evaluation board for EM8500	EMEV8500
Development kit for EM8500	EMDV8500
Evaluation board for EM8502	EMEV8502
Development kit for EM8502	EMDV8502
Evaluation board for EM8504	EMEV8504
Development kit for EM8504	Not available