



**ALPW-BLEKEY002**



**Bluetooth® low energy USB Nano Dongle**

## Description

The ALPW-BLEKEY002 USB Nano Dongle is a complete ready-to-use single-mode *Bluetooth®* low energy compliant solution to be connected on PC's or any embedded device through USB.

The ALPW-BLEKEY002 Nano Dongle is provided with a *Bluetooth®* low energy protocol stack, embedded in the USB key itself with the HID profile, the Virtual COM Port, and the demo application on PC to easily evaluate the connectivity solution.

Alpwise solutions benefit from best in class product from wireless and manufacturer leader.



## Main Features

- Ready-to-use *Bluetooth®* low energy solution.
- Bluetooth v4.0 single mode compliant which supports Master and Slave Mode.
- HCI module using a virtual COM port emulation through USB.
- Bluetooth low energy stack, including HID, GAP, SMP, ATT and GATT profiles.
- Transparent mode through virtual COM Port can be downloaded from Alpwise DK Manager on PC to enable demo application to run.
- Can be used together with the Alpwise SDKs to get a complete tool to ease prototyping and product development.
- A full connection with two keys enables a very quick evaluation of the technology.
- Compliant with Android, Windows XP, Vista, Seven (32 or 64 bits)

## Main Features

The ALPW-BLEKEY002 Nano Dongle enables any *Bluetooth® Smart device* to be connected to a PC, a tablet or a TV :

- Joystick for games on Smart TV
- Mouse, keyboard, ...

## Contact



### Alpwise Headquarter

4 avenue Doyen Louis Weil  
38000 Grenoble, FRANCE  
T: +33 4 76 22 22 50  
F: +33 4 76 22 15 64  
alpwise@alpwise.com  
www.alpwise.com

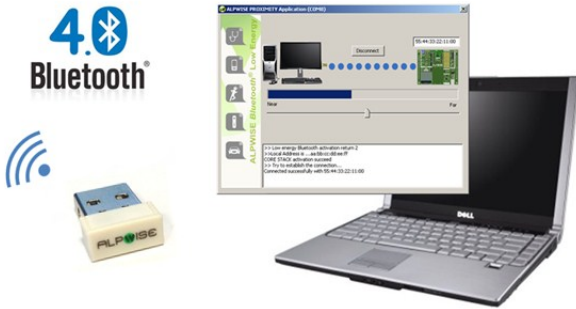
### Alpwise Worldwide

You can buy our products through our International distributors. You will find the distributors details on our website on the contact page.

Follow us on :



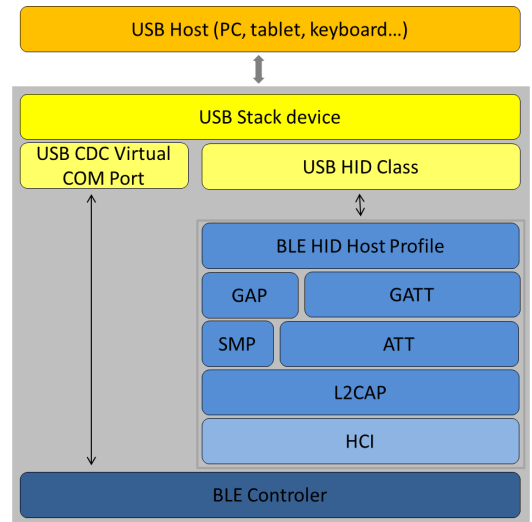
## Demonstration Software



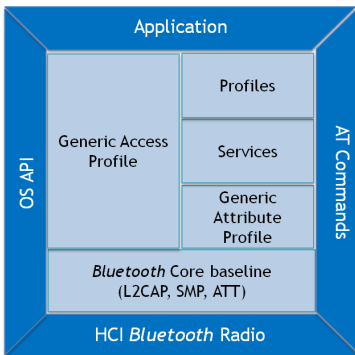
- The ALPW-BLEKEY002 is provided with Application demo for Battery Status, Find Me, and Proximity Profiles.
- Other application demo will come all along profile releases.
- In order to transform this evaluation kit to a full development kit, you may add the Bluetooth low energy protocol stack SDK.

## Firmware Software

- The Bluetooth® 4.0 single mode stack is embedded in the key to enable a USB Plug & Play connection to any service without any change.



## Companion Products



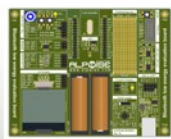
### Bluetooth® low energy protocol stack SDK.

The ALPW-BLESKD001 provides the software environment tools to implement the single mode Bluetooth® low energy 4.0 compliant protocol stack into any embedded product.

## More companion products



ALPW-BLEM  
BLE module



ALPW-BLEEVB  
Evaluation board



ALPW-BLESKD  
BLE Stack SDK

Along with the ALPW-BLEKEY002 USB BLE Nano Dongle, Alpwis provides all the tools and facilities to easily implement your Bluetooth® application: modules, evaluation board, development kit, SDK...

The Bluetooth® word mark and logos are registered trademarks owned by Bluetooth SIG, Inc. and any use of such marks by Alpwis is under license. Other trademarks and trade names are those of their respective owners.